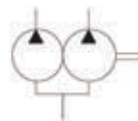


PV2R High Pressure Fixed Displacement Double Vane Pumps



Symbol



Outlet position

How to order

F-	PV2R13	-6	-76	-F	-1	R	-U	U	-10
Prefix Omit-using: Antiwear oil water glycol fluid F: Phos- phate ester fluid	Series	Displacement (L/min)		Mounting F: flange mounting L: foot mounting	Shaft 1: Str.key Standard 2: Str.key	Rotation R: CW Standard L: CCW	Outlet position		Design 10
		Cover end pump					Cover end pump		
	PV2R12	6, 8, 10	26, 33, 41,				U: 45° Left up Standard D: 45° Right down R: 45° Right up L: 45° Left down	U: Left up Standard D: Right down R: Right up L: Left down	
		12, 14, 17, 19, 23, 25, 28, 31	47, 53, 59, 65, 75						
PV2R13	6, 8, 10	52, 60, 66,	U: Left up Standard D: Right down R: Right up L: Left down						
	12, 14, 17, 19, 23, 25, 28, 31	76, 85, 94, 116, 125, 136, 153							
PV2R23	26, 33, 41, 47, 53, 59, 65, 75	52, 60, 66, 76, 85, 94, 116, 125, 136, 153	U: 45° Left up Standard D: 45° Right down R: 45° Right up L: 45° Left down						

Specification

Model	Dis-charge port	Disp. (L/min)	Rated pressure (kgf/cm ²)			Output flow (L/min)					Power (kw)					Speed (r/min)		Weight (kg)
			Special oil	Anti-wear oil	Com-mon oil	Discharge pressure(Mpa)										Min.	Max.	
						0.7	7	14	pn	21	0.7	7	14	pn	21			
PV2R12	Shaft end pump	26	21	17.5	14	39	36.5	34	32.5	31.2	0.6	6	11	13.7	16.5	750	1800	25
		33				49	47	44	42.8	42	0.6	7.5	14	17	20.5			
		41				61	58.9	56.1	55	53.5	0.9	8.2	16	20.5	24.5			
		47				70	67.5	64.6	63.8	62	1	9	18	23.5	27			
		53				77	73.4	71	69	67	1.1	10	20.5	26	31			
		59				85	82	79	77	76	1.2	12	23.5	29	34			
		65				95	91.5	88	86	85	1.3	13	26	32	38			
		75				109	105	101	99.2	98	1.5	15	30	37	43			
		6				8.4	7.5	6.5	6	5.6	0.2	1.5	3	3.7	4.4			
	8	11.7	10.8	9.9	9.4	9	0.2	2	3.8	4.8	5.2							
	10	13.6	12.9	11.9	11.5	10.8	0.2	2.3	4.3	5.3	6.4							
	12	18	17	15.8	15.2	14.8	0.3	2.7	5.2	6.5	7.8							
	14	20.2	19	17.8	17.2	16.7	0.3	3	5.7	7.2	8.5							
	17	24.5	23.5	22.2	21.5	21	0.4	3.3	6.8	8.5	10.1							
	19	27.5	26.5	25.1	24.5	24	0.4	3.6	7.7	9.5	11.5							
	23	33.2	32.2	31.1	30.5	30	0.5	4.6	9.4	12	14							
	25	37	36	35	34.1	33.8	0.5	5	10.5	12.7	16							
	28	41.1	40	38.5	37.8	37.1	0.55	5.4	10.6	13	16.5							
31	45.8	44.5	43.4	43	—	0.6	6.1	12.4	14.4	—								