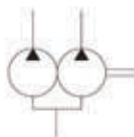


## V Double Vane Pumps for Industrial

### Symbol



### How to order

(F3-)	****V	**	A	**	(F)	-*	*	10	*
Prefix	Series	▲ Code	Port connection	▲ Code	Mounting	Shaft	Port orientation	Design	Rotation
Omit-using:		(shaft end pump)		(cover end pump)	Omit	1-Straight key		10	(viewed from shaft end of pump)
Antiwear oil	2520V	10,12,14,15,17,19,21	A-SAE	2,3,4,5,6,7,8,9,10,11,12,14	Flange mounting	86-HD.straight key	See below table		L-CCW
water glycol fluid	3520V	21,25,30,32,35,38,45	4-Bolt flange	2,3,4,5,6,7,8,9,10,11,12,14	Foot mounting	11-Spline			R-CW
F3: Phosphate ester fluid	3525V	21,25,30,32,35,38,45		10,12,14,15,17,19,21					
	4520V	42,45,50,57,60,66,75		2,3,4,5,6,7,8,9,10,11,12,14					
	4525V	42,45,50,57,60,66,75		10,12,14,15,17,19,21					
	4535V	42,45,50,57,60,66,75		21,25,30,32,35,38,45					

Rated capacity (USgpm) at 1200 rpm.0.69MPa(100psi)

### Port orientation table (viewed from cover end of pump)

Port orientation		All series (except 4535V)	4535V
With No.1 outlet opposite inlet	AA	No.2 outlet 135° CCW from inlet	No.2 outlet opposite inlet
	AB	No.2 outlet 45° CCW from inlet	No.2 outlet 90° CCW from inlet
	AC	No.2 outlet 45° CW from inlet	No.2 outlet in line with inlet
	AD	No.2 outlet 135° CW from inlet	No.2 outlet 90° CW from inlet
With No.1 outlet 90° CCW from inlet	BA	No.2 outlet 135° CCW from inlet	No.2 outlet opposite inlet
	BB	No.2 outlet 45° CCW from inlet	No.2 outlet 90° CCW from inlet
	BC	No.2 outlet 45° CW from inlet	No.2 outlet in line with inlet
	BD	No.2 outlet 135° CW from inlet	No.2 outlet 90° CW from inlet
With No.1 outlet inline with inlet	CA	No.2 outlet 135° CW from inlet	No.2 outlet opposite inlet
	CB	No.2 outlet 45° CCW from inlet	No.2 outlet 90° CCW from inlet
	CC	No.2 outlet 45° CCW from inlet	No.2 outlet in line with inlet
	CD	No.2 outlet 135° CW from inlet	No.2 outlet 90° CW from inlet
With No.1 outlet 90° CW inlet	DA	No.2 outlet 135° CW from inlet	No.2 outlet opposite inlet
	DB	No.2 outlet 45° CCW from inlet	No.2 outlet 90° CCW from inlet
	DC	No.2 outlet 45° CCW from inlet	No.2 outlet in line with inlet
	DD	No.2 outlet 135° CW from inlet	No.2 outlet 90° CW from inlet